



## PRICE LIST

- All prices exclude VAT and delivery ■ Cleared payment is required before dispatch
- Prices - ex works (Somerset UK) ■ Delivery arranged at cost
- We normally hold UK stocks for immediate dispatch ■ For non stock items please contact us

### EPDM Granules

- Available in 22 vibrant colours
- Available in 25kg bags on 1 tonne pallets
- In UK stock for immediate delivery
- All colours peroxide cured for superior colour stability & uv resistance
- High polymer content for extra durability

### EPDM STANDARDS £1.05 PER KG



01 RED



08 GOLDEN YELLOW



09 BROWN



10 LIGHT BROWN



11 GREY



12 LIGHT GREY



13 IVORY/ EGGSHELL



17 GRASS GREEN

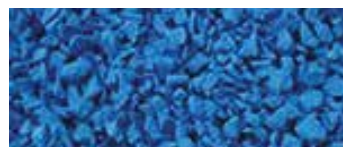
### EDPM BRIGHTS £1.15 per kg



02 GREEN



03 LIGHT GREEN



04 BLUE



05 LIGHT BLUE



06 ORANGE



07 YELLOW



16 WHITE



18 NAVY BLUE



20 BLUE GREY



21 TURQUOISE

### EDPM SPECIALS £1.20 per kg



14 PINK



15 PURPLE



19 ROSE RED

### BLACK £0.42 per kg



524 BLACK



## SBR

SBR Base £0.20 per kg	SBR Base £0.20 per kg	SBR Crumb Top £0.25 per kg	SPORTS INFILL
			NOW AVAILABLE  CONTACT US FOR DETAILS
2-6mm 25kg bag	2-6mm 1000kg bag	1-3mm 25kg bag	

## RUBBER MULCH £0.88 per kg

Available in 10kg bags max 90 bags per pallet

			
MBLA10 Black	MBLU10 Blue	MBRO10 Brown	MGRE10 Green
			
MRW10 Redwood	MSG10 Cedar Grey		

## IMPORTANT

### *SURFACING OPTIONS – PROS AND CONS* **COLOUR TRANSFER AND MARKING**

While EPDM granulate is a more expensive surfacing option, it is a fully pigmented product with no colour wear or risk of marking. Mulch is an affordable alternative. However, it is made from black rubber shred with a colour coating. Please note that due to normal wear and tear and UV exposure, over time all colour coated products are likely to expose the base rubber. As a result, mulch may leave black marks on users if not recoated as part of a maintenance programme.

Our black SBR crumb topping is another cost-effective solution but this may also cause marks.

### **BATCH VARIATIONS**

There are often variations in shade and shred size between batches of mulch. Any orders of a single colour over 100 bags may be from more than one batch. For batch information refer to manufacture dates and codes marked on the pallet.

Miroad Rubber Ltd, Unit 1 Showground Road, Bridgwater TA6 6AJ

**Tiles and pavers are normally made to order**  
**To place an order contact us by phone or email**

■ Tel: 01278 727755 ■ [sales@miroadrubber.co.uk](mailto:sales@miroadrubber.co.uk)



## Distributors of Leeson's Polyurethanes market-leading binder systems

- Non-hazardous, fast curing, flexible, solvent free PU binders
- Primers for concrete substrate
- Accelerators for faster cure time at low temperatures
- Winter and summer grades. Non yellowing (aliphatic) also available
- Products for rubber crumb, rubber mulch and stone

PU4242CW  
Rubber Crumb Binder



22kg £63.80 (£2.90 per kg)

PU4751 Aliphatic  
(non-yellowing)  
Rubber Crumb Binder



22kg £154.00 (£7.00 per kg)

PU5380 Unpigmented  
Rubber Mulch Binder



22kg £66.00 (£3.00 per kg)

D4861 Rubber  
Crumb Binder Accelerator



1kg £20.10

PU3922  
PU Unpigmented Primer



25kg £105.00 (£4.20 per kg)

PU3922 Unpigmented  
Primer Natural



5kg £23.25 (£4.65 per kg)

Leeson Bound Kit  
for Stone



7.5kg £53.84

D4860  
Stone Binder Accelerator



1kg £14.90

## IMPORTANT

### PU BINDER

All PU binder from any manufacturer will change colour/yellow over time. This is normal and inherent to the product. As you would expect, the yellowing effect is more noticeable when used with light colours of EPDM. To avoid the yellowing effect, we offer a non-yellowing (aliphatic) binder to at a higher cost than standard quality.

Miroad Rubber Ltd, Unit 1 Showground Road, Bridgwater TA6 6AJ

**Tiles and pavers are normally made to order**  
**To place an order contact us by phone or email**

■ Tel: 01278 727755 ■ [sales@miroadrubber.co.uk](mailto:sales@miroadrubber.co.uk)



Rubber Tiles, Bricks and Pavers		PRICE LIST		
---------------------------------	--	------------	--	--

Shape Dimensions	Thickness (mm) CFH (m)	Weight per Tile (kg)	Colour Topping	Price ex works UK £/m2
------------------	---------------------------	----------------------	----------------	------------------------



DOG BONE 195mm x 160mm

25	0.625	Full Pigmented	15.29
40	1.0	Full Pigmented	19.72
45	1.2	Full Pigmented	21.25

45mm in UK stock in red, green and black



SHOOTING BLOCK

Height x Width x Thickness  
 500mm x 200mm x 100mm  
 500mm x 300mm x 200mm  
 500mm x 250mm x 250mm

100	8.0	SBR-Black	15.00 piece
	8.0	Full Pigmented	18.00 piece
200	28.0	SBR-Black	32.00 piece
	28.0	Full Pigmented	34.00 piece
250	29.0	SBR-Black	33.00 piece
	29.0	Full Pigmented	35.00 piece

Rubber Curb Edging		PRICE LIST		
--------------------	--	------------	--	--

Shape Dimensions	Thickness (mm) CFH (m)	Weight per Tile (kg)	Colour Topping	Price ex works UK £/m2
------------------	---------------------------	----------------------	----------------	------------------------



RUBBER KERB EDGING - 1220 x 100 x 110mm  
- 1220 x 100 x 200mm

110		Black	13.00 piece
		Red/Green	15.60 piece
200		Black	20.80 piece
		Red/Green	23.40 piece



CAP FOR FIXING

		Black/Red/Green	2.00 piece
--	--	-----------------	------------

Miroad Rubber Ltd, Unit 1 Showground Road, Bridgwater TA6 6AJ

**Tiles and pavers are normally made to order  
To place an order contact us by phone or email**

■ Tel: 01278 727755 ■ sales@miroadrubber.co.uk



Rubber Tiles, Bricks and Pavers	PRICE LIST			
---------------------------------	------------	--	--	--

Shape Dimensions	Thickness (mm) CFH (m)	Weight per Tile (kg)	Colour Topping	Price ex works UK £/m2
------------------	---------------------------	----------------------	----------------	------------------------



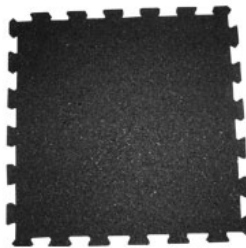
H PAVER 304mm x 304mm

25	1.8	1.8	SBR-Black	16.33
		1.8	Pigmented topping	17.21
45	3.4	3.4	SBR-Black	22.38
		3.4	Pigmented topping	23.26



6 H PAVER 912mm x 528mm

45	20	20	SBR-Black	22.38
		20	Pigmented topping	23.26



WETPOUR BASEMAT 500mm x 500mm

40	6.8	6.8	Wetpour basemat SBR-Black	15.77
----	-----	-----	---------------------------	-------



V INTERLOCK MAT 500mm x 500mm

10	2.3	2.3	SBR-Black	10.88
		2.3	Full Pigmented	11.76
		2.3	10% Speckled Epdm 0515	12.64
		2.3	30% Speckled Epdm 0515	13.52
		2.3	50% Speckled Epdm 0515	14.40
15	3.4	3.4	SBR-Black	12.48
		3.4	Full Pigmented	13.36
		3.4	10% Speckled Epdm 0515	14.24
		3.4	30% Speckled Epdm 0515	15.12
		3.4	50% Speckled Epdm 0515	16.00



40 I-LOCK MAT 1100mm x 1145mm

10	9.5	9.5	SBR-Black	11.17
		9.5	Full Pigmented	12.01
		9.5	20% EPDM Speckled	13.37

Miroad Rubber Ltd, Unit 1 Showground Road, Bridgwater TA6 6AJ

**Tiles and pavers are normally made to order  
To place an order contact us by phone or email**

■ Tel: 01278 727755 ■ sales@miroadrubber.co.uk



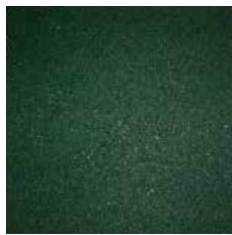
<b>Rubber Tiles, Bricks and Pavers</b>	<b>PRICE LIST</b>
--	-------------------

Shape Dimensions	Thickness (mm) CFH (m)	Weight per Tile (kg)	Colour Topping	Price ex works UK £/m2
------------------	---------------------------	----------------------	----------------	------------------------



SQUARE TILE 500mm x 500mm

25	5.2	5.2	EPDM Topping 5-6mm	25.80
		5.0	SBR - Black	11.50
		5.0	Pigmented topping	12.38
45	9.2	9.2	EPDM Topping	34.17
CFH 1.4m	9.0	9.0	SBR - Black	18.99
		9.0	Pigmented topping	19.87
50	10.2	10.2	EPDM Topping	36.37
CFH 1.5m	10.0	10.0	SBR - Black	20.37
		10.0	Pigmented topping	21.25
70	13.2	13.2	EPDM Topping	41.27
CFH 2.0m	13.0	13.0	SBR - Black	25.32
		13.0	Pigmented topping	26.20
110	19.0	19.0	EPDM Topping	46.00
CFH 3.0m	19.0	19.0	SBR - Black	38.00
		19.0	Pigmented topping	38.00



SQUARE TILE 1000mm x 1000mm  
1 piece = 1 sq metre

10	9.2	9.2	SBR-Black	10.88
		9.2	Full Pigmented	11.76
		9.2	10% Speckled Epdm 0515	12.64
		9.2	30% Speckled Epdm 0515	13.52
		9.2	50% Speckled Epdm 0515	14.40
15	13.6	13.6	SBR-Black	12.48
		13.6	Full Pigmented	13.36
		13.6	10% Speckled Epdm 0515	14.24
		13.6	30% Speckled Epdm 0515	15.12
		13.6	50% Speckled Epdm 0515	16.00



SQUARE CROSS TILE 1000mm x 1000mm  
1 piece = 1 sq metre

10	9.2	9.2	SBR-Black	10.88
		9.2	Full Pigmented	11.76
		9.2	10% Speckled Epdm 0515	12.64
		9.2	30% Speckled Epdm 0515	13.52
		9.2	50% Speckled Epdm 0515	14.40
15	13.6	13.6	SBR-Black	12.48
		13.6	Full Pigmented	13.36
		13.6	10% Speckled Epdm 0515	14.24
		13.6	30% Speckled Epdm 0515	15.12
		13.6	50% Speckled Epdm 0515	16.00

Miroad Rubber Ltd, Unit 1 Showground Road, Bridgwater TA6 6AJ

**Tiles and pavers are normally made to order  
To place an order contact us by phone or email**

■ Tel: 01278 727755 ■ sales@miroadrubber.co.uk



<b>NEW - PLAYGROUND GRAPHIC TILES</b>	<b>PRICE LIST</b>
---------------------------------------	-------------------

## ADDING A NEW DIMENSION TO THE PLAY EXPERIENCE

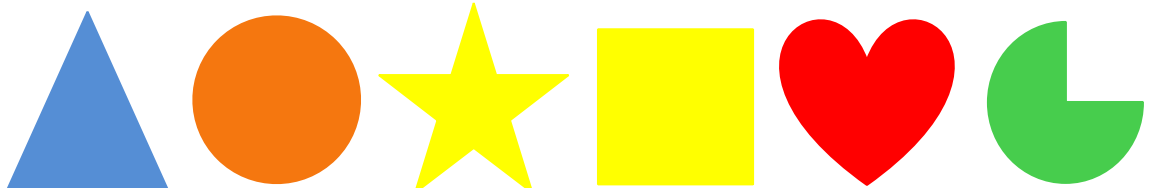
Enhance the play value of your wetpour area with our custom made prebonded graphics. They come with the graphic already set into a square tile. You can choose your own tile size and colour combinations. We can make tiles in any of the colours in our EPDM granulate range, shown on page 1 of this price list. Or if you are in a hurry we sometimes hold stocks of certain designs - just ask.

### How to order your graphics tiles (price per tile)

- Select your graphics from the ranges below
- Select the colour for each graphic from our EPDM range
- Select the colour for each outer tile from our EPDM range
- Specify your tile size
- Specify quantities for each design

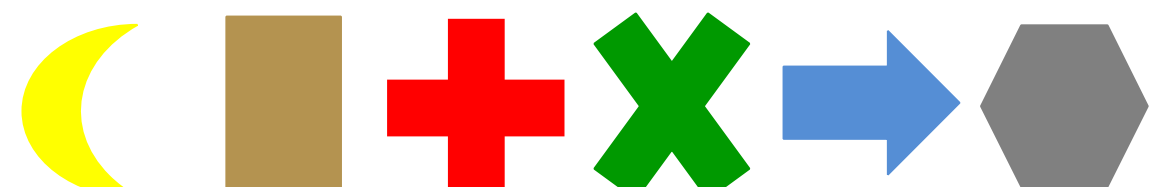
**BAND 1**

500mm £20  
1000mm £80



**BAND 2**

500mm £20  
1000mm £80



**BAND 3**

500mm £30  
1000mm £110



**BAND 4**

500mm £40  
1000mm £140



**BAND 5**

500mm £50  
1000mm £160



**BAND 6**

500mm £50  
1000mm £160



**SNAKE**

£200



Miroad Rubber Ltd, Unit 1 Showground Road, Bridgwater TA6 6AJ

**Tiles and pavers are normally made to order  
To place an order contact us by phone or email**

Tel: 01278 727755 sales@miroadrubber.co.uk